

451

Sixty Years of Service in Northfield Community

History of St. John's Church shows phenomenal development from humble pioneer beginnings, to comprehensive activities of present-day Congregation.

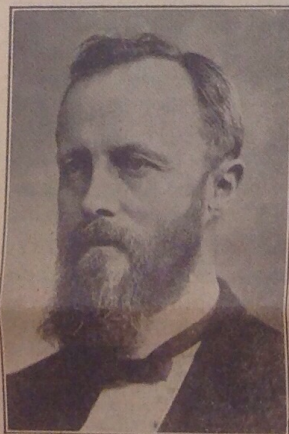
Written for The News
By PROF. I. F. GROSE.

Let me begin this write-up by calling attention to a book called "St. John's Lutheran Church, Northfield, Minnesota. A Record of the first Fifty Years, 1869-1919." It was edited by a committee consisting of Prof. O. G. Felland, Rev. Nils Kleven, and Prof. Olav Lee. The book contains a large amount of information and should be read by every member of St. John's who wishes to obtain a definite idea of its past up to 1919. My purpose shall be to supplement, in some measure, what is found in the book, altho much which I write must necessarily be a duplication. I had not myself read the book carefully until the editor of The News asked me to write an article concerning St. John's church to be published just prior to the observance of its sixtieth anniversary on Sunday, May 26.

The beginnings of St. John's church, like so many beginnings, are partly enveloped in obscurity. The pioneer Norwegian Lutheran pastors wandered from place to place thruout the Northwest preaching the gospel of Jesus Christ to their countrymen, establishing congregations, or forming preaching stations which, as time passed on, frequently evolved into strong Lutheran congregations.

Pastor Muus Was Founder.

The Norwegian Lutherans of Northfield did not become a congregation the first time or the first few times the Rev. B. J. Muus visited them. Very few Norwegian Lutherans then dwelt in Northfield. Natives of New York

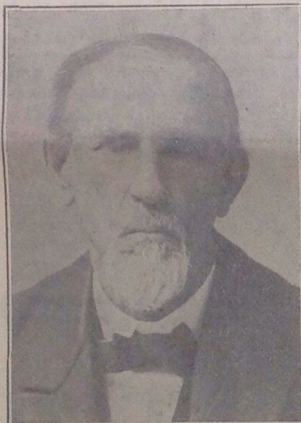


REV. B. J. MUUS,
pioneer Lutheran Missionary who organized St. John's Congregation in 1869.

and the New England states presumably formed the bulk of the new settlers here at the time. A Third Ward

Skaug, all of whom, but two, are dead. These articles were again superseded by a new constitution in 1923.

The first secretary's minutes, now extant, bear the date April 14, 1878. Prof. A. K. Teisberg was the secretary. Not until June 19, 1878, do we find any mention made of the board of trustees. The minutes of that date state that A. J. Svien was made a



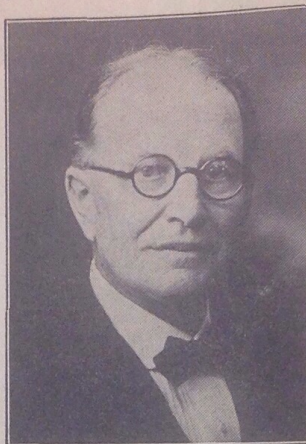
REV. NILS A. QUAMMEN,
first pastor, 1869-1874.

member of the board of trustees. The minutes of December 5, 1878, inform the reader that the officials of the congregation are the following: Members of the board of trustees: H. O. Graff, A. J. Svien and S. A. Siverts; treasurer, S. A. Siverts; secretary, A. K. Teisberg; revisers: J. Quam and A. K. Teisberg.

That Siverts and Teisberg were elected to two offices each seems to indicate paucity of members in the congregation at the time. And that such must have been the case is evidenced by the fact that when a year and a half later a very live question was up for consideration, seemingly stirring the voters much—the question as to whether the church edifice should be located on the east or on the west side of the river—only eleven votes were cast at the meeting deciding the matter. The voters were Harald Thorson, S. A. Siverts, Even Alfson, A. K. Teisberg, Ole T. Lysne, H. A. Boe, Johan Kildahl (father of the two well known brothers, J. N. and H. B. Kildahl), H. O. Graff (father of Mrs. J. J. Stetten), A. Vold, J. Quamme (I wonder if he is the person designated sometimes elsewhere in the minutes as J. Quam), and A. J. Svien. How many of these, if any were charter members, the writer, as already stated, has had no way of determining with his present available sources of information.

Seven Permanent Pastors.
Resides a number of pastors who

Adds to Recorded Local History



PROF. I. F. GROSE,

whose sketch of the sixty years' history of St. John's Lutheran church, published today, represents another authentic chapter in the recorded history of Northfield and its institutions, to which he has already made important contributions. For fifty years Mr. Grose has been so intimately associated with the life of St. John's church and of St. Olaf college with which the church has always been closely allied, that few are as well qualified as he is to recount the history of the congregation. His personal reminiscences add an element of special interest.

Former Residents Wed 51 Years.

Old Northfield friends of Mr. and Mrs. Frank L. White, who lived here for many years but have now been gone for a score of years, will be interested in knowing that they will celebrate their fifty-first wedding anniversary on June 4. Mr. White, who was chief of police in Northfield prior to the late Robert S. Ramage, is now eighty-two years old. Mrs. White is eighty-one. They now live in Des Moines, Iowa.

Saturday is Poppy Day. Wear a poppy, symbol of sacrifice and patriotism.

37 SPRING COATS for Clearance \$10

Waldeland Gives Historic Volume to St. Olaf College

A handwritten book of great historic interest, penned in the old Norwegian script by Hans Nilsen Hauge, a famous religious reformer of Norway, has been presented to St. Olaf college by Dr. M. E. Waldeland. In presenting the book to the college, Dr. Waldeland spoke at chapel exercises Monday, outlining its history and sketching the life and purposes of its author.

Written sometime between 1804 and 1807, the book had been in the Waldeland family for more than a hundred years. It was presented by the author to John Haugvalstad in 1897, and was given by him to Lars Erickson Waldeland, grandfather of Dr. Waldeland. In 1844 it came into the possession of Dr. Waldeland's father who in 1901 passed it on to the son who has now presented it to St. Olaf.

The manuscript is bound in leather. The first part of the volume deals with Hauge's conception of conversion and faith, and the latter part with his doctrine of happiness.

Boost the Northfield Band.

Insure in SURE insurance.



Somebody said, "There never was anything made that someone else could not make it worse and sell it for less."

Some insurance is made so it can sell for less. And the defects never show 'till it's too late.

What could be so worthless as uncertain insurance? In the very word "in-sur-ance" the accent is on "sur."

And that's where the accent is in any insurance placed through this agency.

Wm. J. Foggett
INSUROR
Office Tel. 173 Res. 173-J-2
Office in P. O. Bldg.