

Guide to Goethe Graphics: Project Specialists



Karl J. Fink

Karl J. Fink is from Armour, South Dakota and since 1982 has been Professor of German at St. Olaf College. He teaches courses on classical German literature, Weimar graphic industries, and specializes in courses on technical and scientific German. He has published articles and books on the works of Goethe and Herder and has written on the history of German science, philosophy, literature, and anthropology. His book manuscript on "Storm and Stress Anthropology" and his CD-ROM on "Goethe's Morphology of Motion" are under review for publication and presently he is making plans to maintain a website for his database on Goethe Graphics.



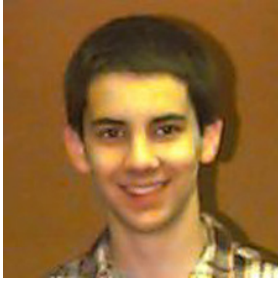
Christoph Höft

Christoph Höft is from Ann Arbor, Michigan and is a graduate of St. Olaf College (1996), where he majored in physics and German. Here he was active in student government with special interest in organizing campus music events. He also was lead guitar player and singer in a student folk and rock band that entertained both mass student campus groups and small academic social gatherings. Christoph, born in Germany, is fluent in written and spoken German and presently is completing his M. A. degree in industrial mathematics at the University of Wisconsin at Milwaukee. He was the Student Assistant for the project on from 1992-94.



Sarah E. Oswalt

Sarah E. Oswalt is from Coon Rapids, Minnesota and is a graduate of St. Olaf College (1999), where she majored in biology and German. She was a Buntrock Presidential Scholar, graduated Magna Cum Laude, and was active in campus social service organizations. She was Assistant Coordinator for the St. Olaf Volunteer Network and did volunteer work for Project Friendship and Head Start programs in Northfield. Sarah is skilled in technical and scientific writing and presently plans to continue professional training in medicine. She was the Student Assistant for the project on Goethe Graphics from 1996-99.



Peter I. Pearson

Peter I. Pearson is from Minneapolis, Minnesota and is a Sophomore at St. Olaf College, where he is planning majors in physics and philosophy. He has four years of high school German and is a two-year winner in competitions for the Minnesota Deutsches Fest. In 1998 he won first place in the category for Computer Language Lessons with a quick-time movie on German for Star Wars. Peter is a student in the Great Conversation with interest in reading classical authors and has special skills in computer graphics and website management. He began work for the project on Goethe Graphics on a part time basis in 1999.



Kjell Stenberg

Kjell Stenberg is from Rochester, Minnesota and is a graduate of St. Olaf College (1998), where he majored in biology with a concentration in business management. He played cello with the St. Olaf Orchestra for four years and, beyond college concert tours, he performed for informal social and academic gatherings. He founded the male voice ensemble, "Cantus," and managed the graphics and market production of the groups first published CD, "Tidings." After graduating Kjell took a full time position with the Academic Computer Center at St. Olaf College. He was a Student Assistant for the project on Goethe Graphics from 1994-96.



Gretchen A. Weisgram

Gretchen A. Weisgram is from Albert Lea, Minnesota and is a graduate of St. Olaf College (1999), where she majored in mathematics with a concentration in art. She played cello for the St. Olaf Philharmonia for three years and designed the orchestra website for the organization. Gretchen has worked for printing and design companies, where she set type, laid out designs, and produced artwork and graphics for clients. And during the school year at St. Olaf she worked for the Academic Computing Center, where she served as assistant and consultant in student and faculty graphics projects. Gretchen has chosen a career in graphic design and plans to continue professional training in digital arts. She was a Student Assistant for the project on Goethe Graphics during 1998-99.