

# 'Miracle' might bring Jan. '79 completion for new Sayles Hill

By JANE FOLTZ

Major renovation of the sixty year old Sayles-Hill gymnasium will begin when the Leighton renewal is finished sometime this winter. According to Keith Covey, Carleton's director of physical planning, Leighton will be finished by this January, and Sayles-Hill construction should get underway in February.

At this time, there are "still some uncertainties" about the locations and sizes of the several services that will be housed under Sayles-Hill's roof. Covey said that "all of us who have been involved are pretty excited about the way things have evolved." Covey said that Sayles-Hill plans should be finalized by the end of this month when the trustees meet to approve the plans and budget.

Assuming that construction begins in February, Covey called a possible January 1979 opening "a small miracle." He projects that the move into the refurbished gym will take place in winter term 1979 with full occupancy by spring term.

Sayles-Hill, which was once hailed as the finest gym in Minnesota, will become Carleton's "community center." Covey stressed the importance of the appellation "community center" as opposed to a student union, envisioning the future Sayles-Hill "as a crossroads of the campus," a meeting place for students, faculty and administration.

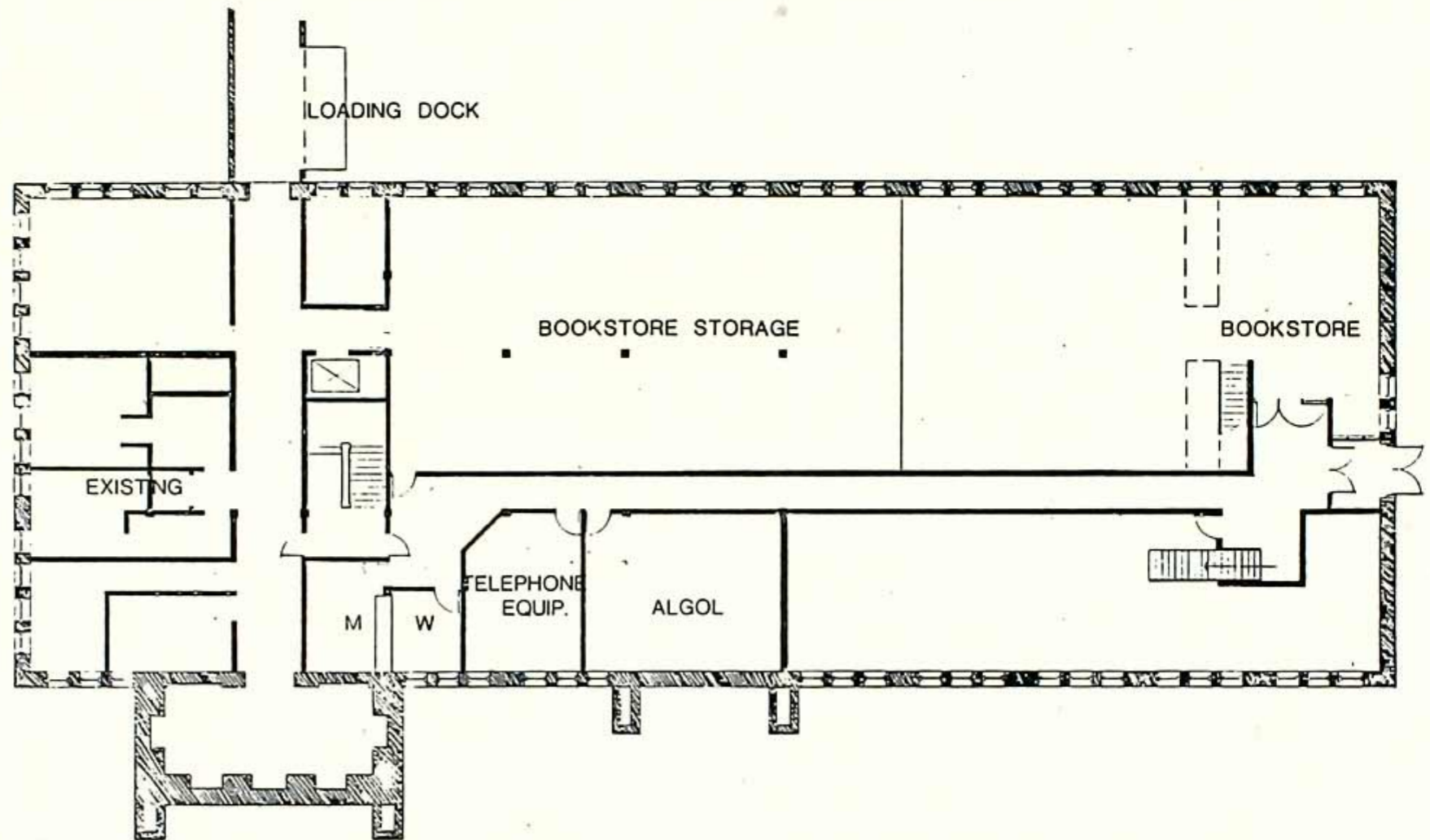
The new building will contain student services that are now scattered around the campus. The expanded post office will use space presently occupied by the health service and first floor offices. The bookstore/Supply shop will be found at the opposite end of the first floor and textbooks will be sold in the basement directly below. The new bookstore will be twice the size of the Willis store and have considerably more storage space. A "sidewalk cafe" will face the bookstore.

To be located in between the bookstore and the cafe is the "Great Space" which is conceived as a comfortably furnished gathering place for dining, studying, talking, dances, and registration. A deck is to be constructed at the main entry level as additional assembly space for warm weather activities. Originally, the "Great Space" was going to cover 4,800 square feet, but the actual size may be slightly smaller, Covey said. The possibility of an expanding front sales area for the bookstore would take some room from the "Great Space" during the day. This detail has not yet been decided upon its practicality and the security system it would require are factors in the decision. Covey is certain that, in any case, the "Great Space" will be 25 to 30 percent larger than Great Hall, which should be free when the admissions and business offices move into their new Leighton locations.

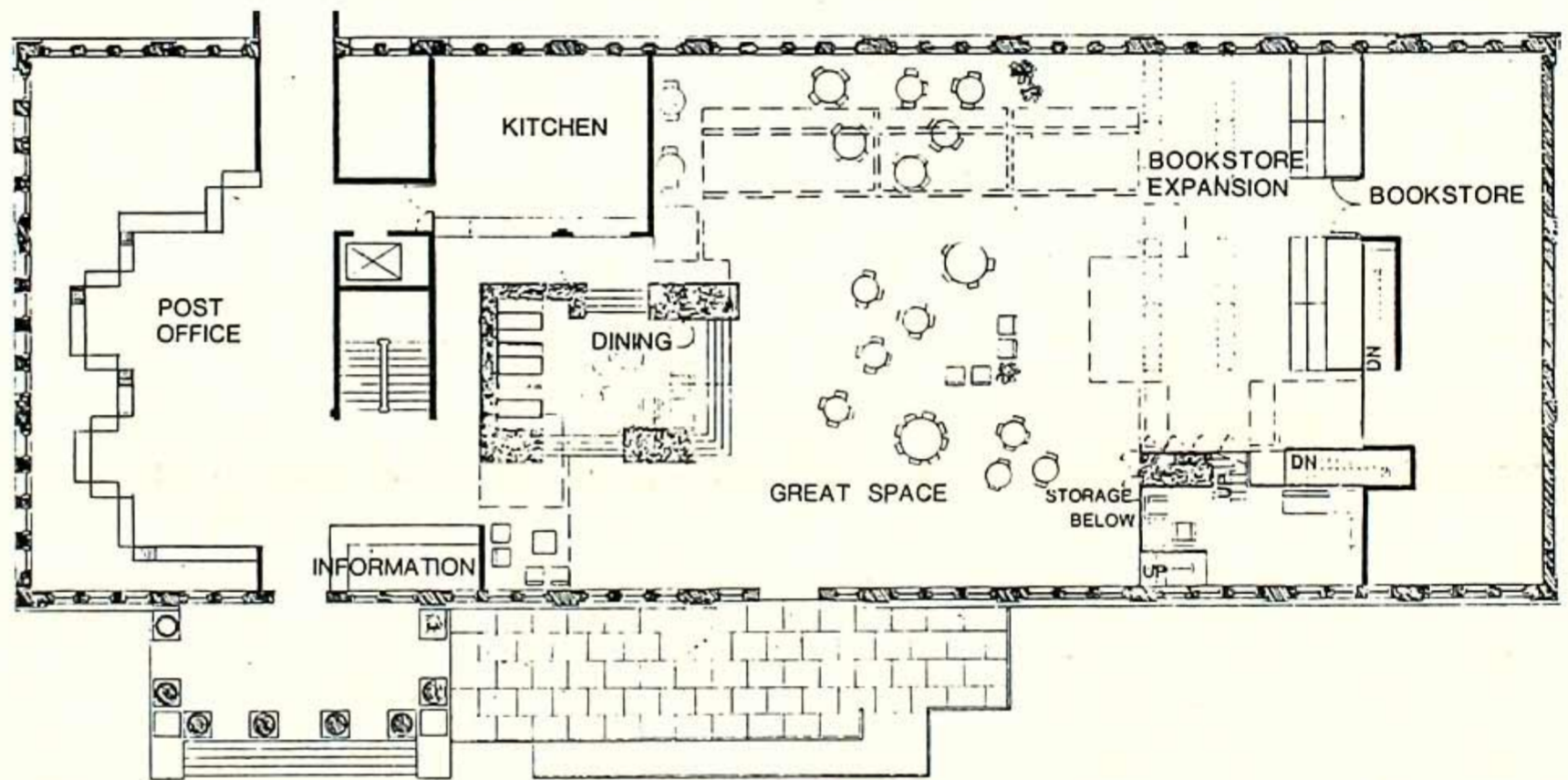
The running track which circles the first floor ceiling will be ripped out. A new northern balcony, overlooking the "Great Space" will provide a lounge and game area with facilities for pool, ping pong, pinball, and foosball. An overflow dining area and a TV lounge will also occupy the second floor.

The second floor faculty offices are in good condition and will become student organization offices and conference rooms. The offices haven't been allocated yet, and Covey cited the possibility of allotment on a yearly bid basis, but remarked that

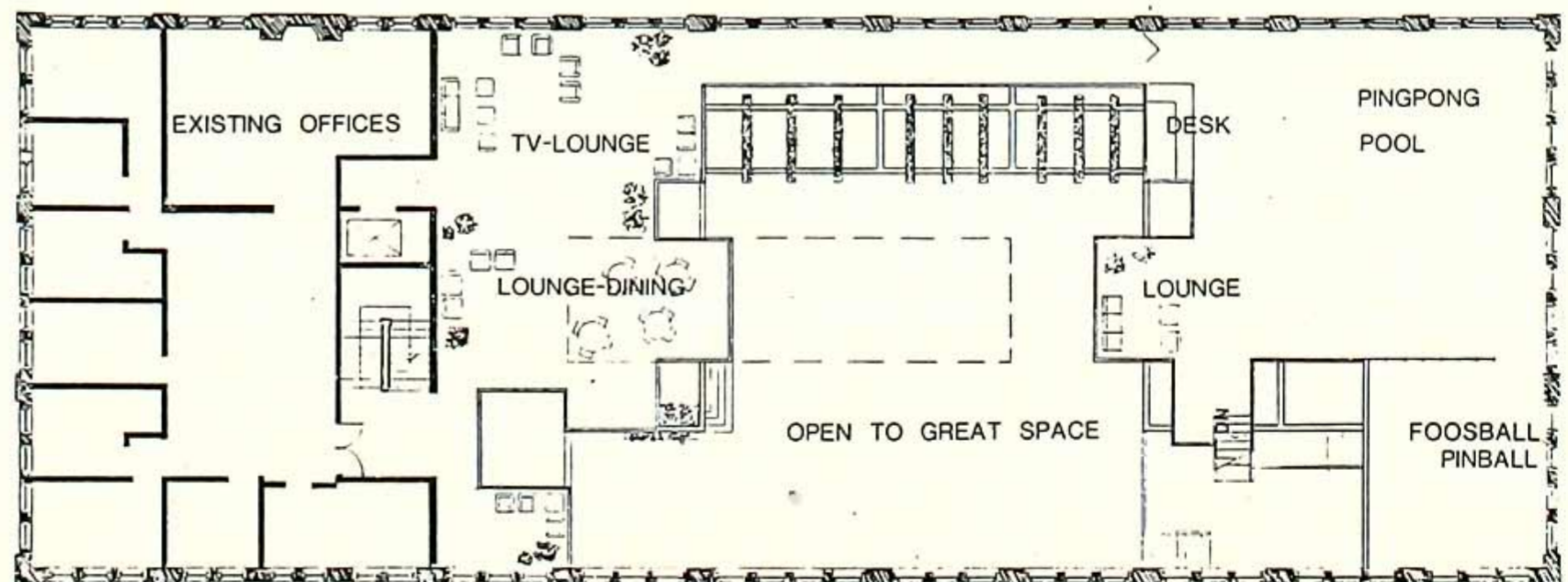
# Sayles-Hill Plans



Basement



First Floor



Second Floor

this will be decided by the Dean of Students Office.

The media center will be moved out of the basement and replaced by a bookstore storage area, the student newspaper office, the switch board and other equipment related to the new Centrex telephone system. The darkrooms will remain as they are for the most part.

Due to the age of Sayles-Hill, new ventilation, heating, and electrical systems will be included in the renovation. All windows will also be

replaced.

Space vacated by post office and bookstore removal in Willis will be taken over and used as classrooms and resource areas by the Education department.

Covey cited \$800,000 for construction and \$75,000 for furnishings as rough estimates of production costs. According to Walter Reeves, vice president for Development and Institutional Relations, one and a half million dollars of the nineteen and a half million dollar capital improve-

ment campaign funds are set aside for Sayles-Hill refurbishing. Capital improvement money comes from various funds, alumni, parents, and corporations. The class of 1928, which will celebrate its 50th reunion this spring, is making Sayles-Hill its special project. They have already pledged over \$300,000 and are expected to pledge more by spring, Reeves said. Covey thinks that Sayles-Hill renewal is an extremely efficient use of capital improvement (Continued on page 10)