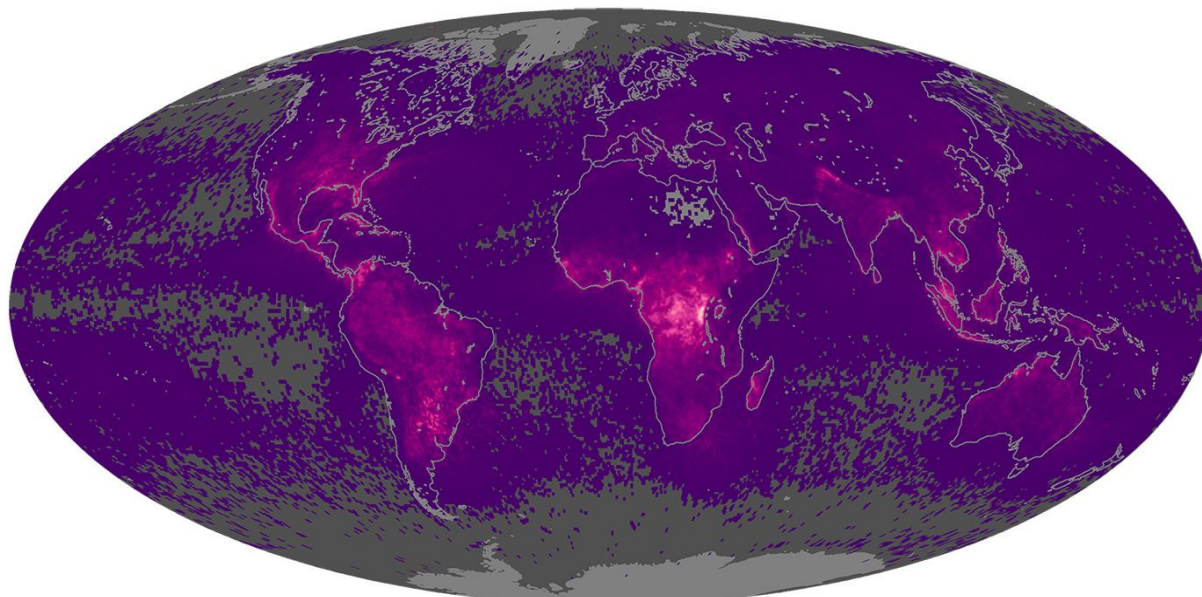
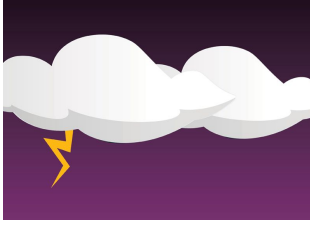


*Guide to the thunderstorms around the world and more!!!*



Lightning Flash Rate (flashes per km<sup>2</sup> per year)  
0.1 75.0 150.0





## *Types of thunderstorms*

*Supercell:* The least severe form of thunderstorms as they are kind of like popcorn in that they are brief, weak storms that grow and die within an hour by heating on a summer afternoon.

*Multicell cluster/line:* Are classified at the moderate danger level to the public and are often accompanied by gusts of high wind and heavy rain.

*Supercell:* Most severe form of thunderstorms that are very dangerous and destructive.

# *Europe and North America*

*Watch Out!!*

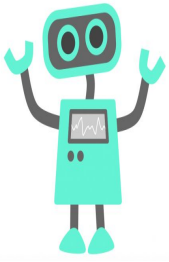
*These continents possess the most destructive storms in the supercell category. Beware of potential lightning, flood-producing rainstorms, hail, and deadly tornadoes.*

*Safe Travels!!*



# Asia

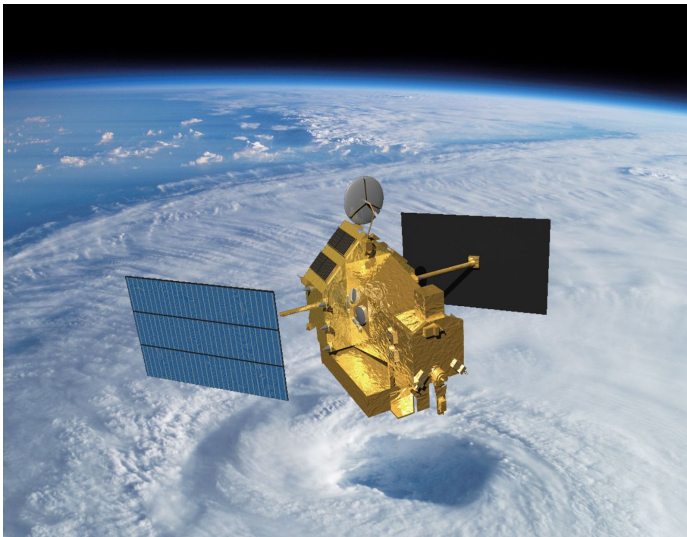




# Technological Museums

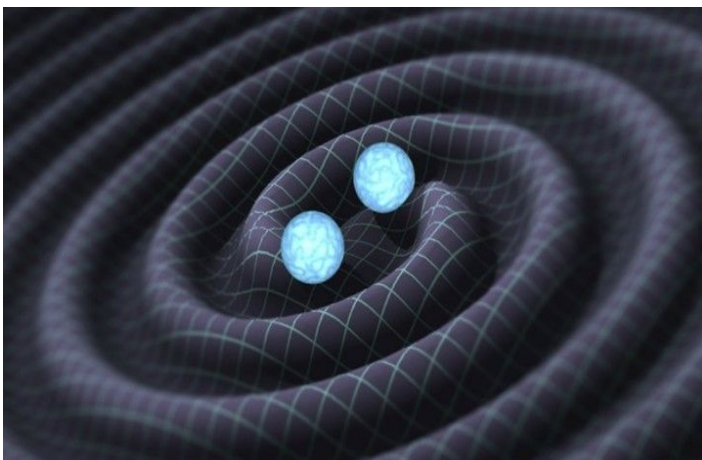
*(These contain information of the devices that help predict thunderstorms)*

## The Satellite Museum:



*To detect thunderstorms, The TRMM Satellite is used. Through this device it is possible to tell the frequency of storms in certain regions.*

## The Gravity Wave Institute:



*Using Gravity waves, we can determine the intensity of thunderstorms. Through this institute, we can observe the studies done on these waves in West Africa regarding the trends in thunderstorms.*

Contact Us at: [Thunderstromsaroundtheworld.com](http://Thunderstromsaroundtheworld.com)

