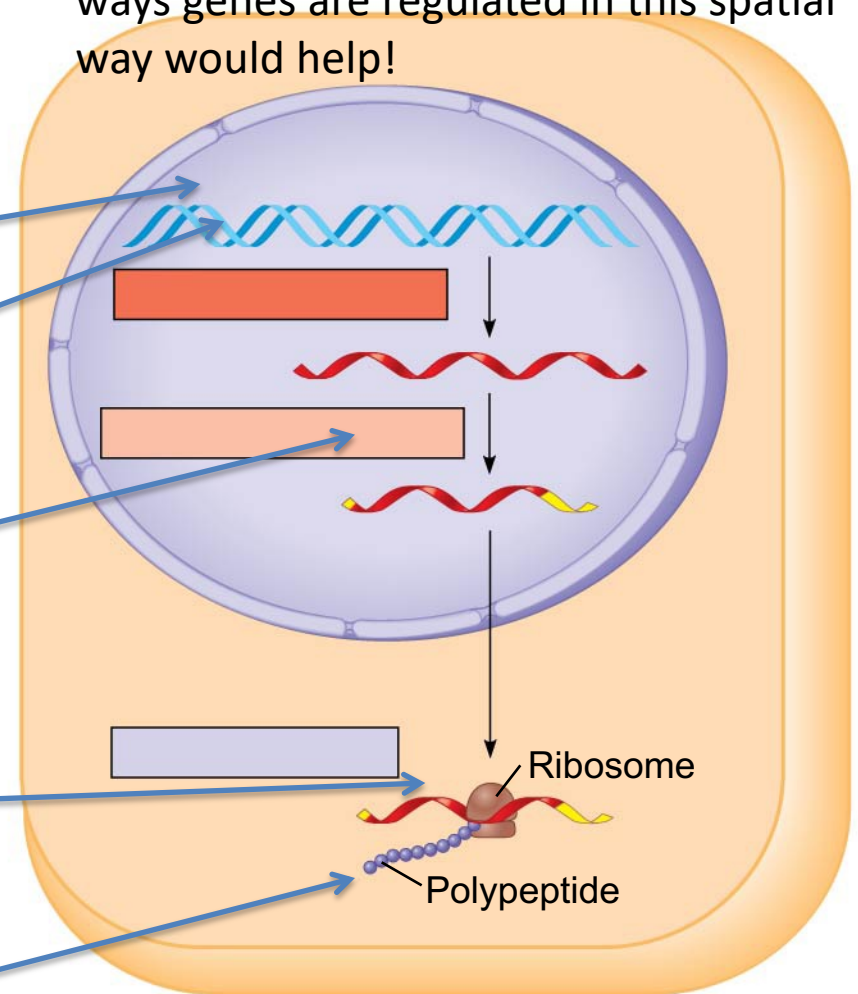


Map the following processes onto the image. Where and when does each take place and what does each do? (I just put the arrows in-you can look up what each does!)

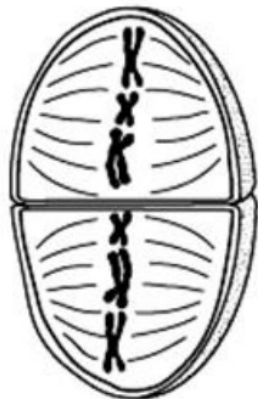
- epigenetic modifications
- transcription factors
- post transcriptional modification (RNA processing, RNA splicing)
- microRNA
- post translational modification

These are kind of imprecise arrows but I thought thinking about the different ways genes are regulated in this spatial way would help!





2



6



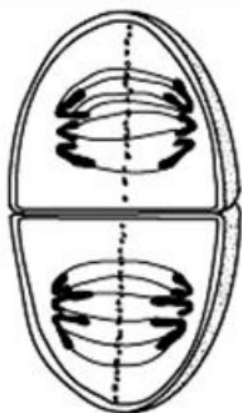
4



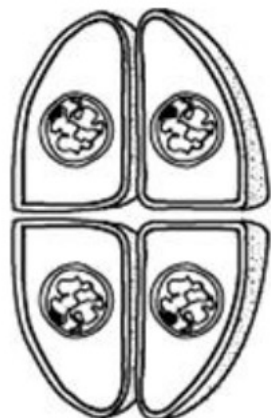
7



1



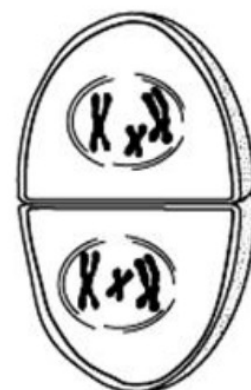
8



9

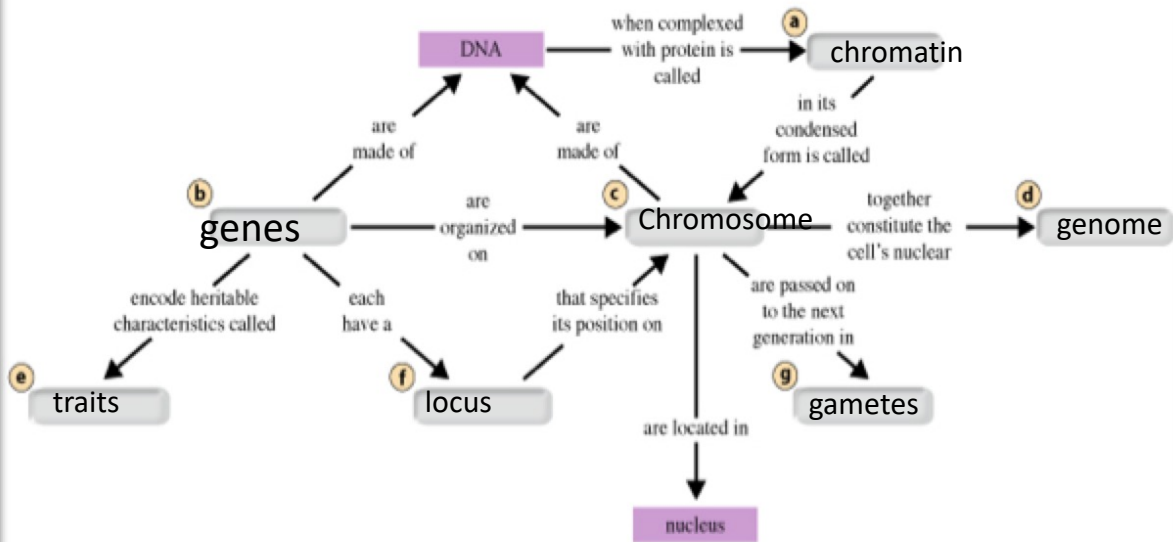


3



5

- genes
- locus
- traits
- genome
- gametes
- chromosomes
- chromatin



- centromere
- homologous chromosomes
- non-homologous chromosomes
- sister chromatids
- nonsister chromatids

